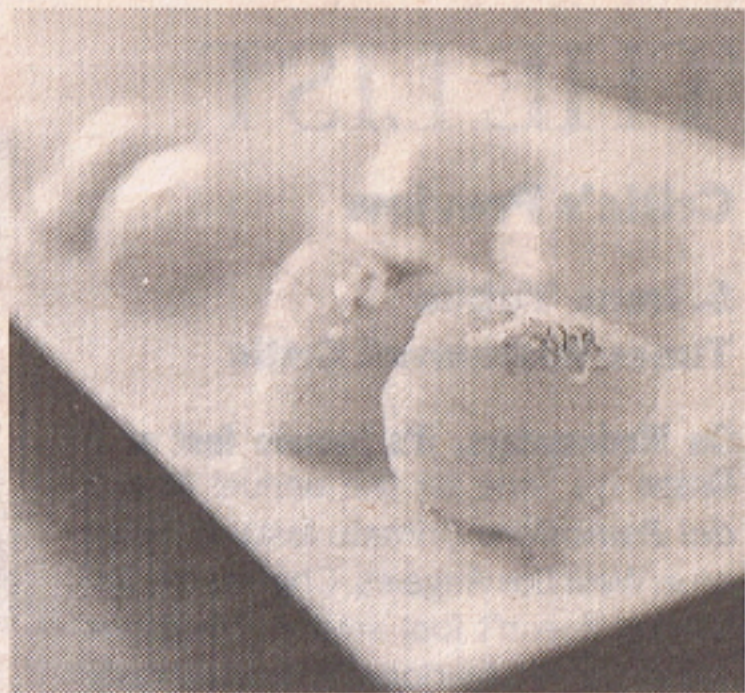


NEW IN TOWN

Sushi Nozawa chef-owner Kazunori Nozawa and son Tom have partnered with Jerry Greenberg, Lele Massimini and Cameron Broumand on **sugarFISH** in **Marina del Rey**. The name was chosen to evoke high-quality, melt-in-your-mouth fish. A streamlined menu keeps costs down, with three levels of *omakase*, all including Nozawa's signature albacore sushi and blue crab roll. **4722½ Admiralty Way, (310) 306-6300; www.sugarfishsushi.com**



ROBERT OLDING